

**PIONITE**<sup>®</sup>  
SURFACE SYSTEMS

# The Pionite® Surface Systems story



Expand your design possibilities with surfacing solutions for virtually any environment.



How it all works together:

**Multiple surfaces.  
One system.**

- *Your vision.  
Our expertise.*
- *Your budget.  
Our performance.*
- *Your requirements.  
Our track record.*

ThruColor™ HPL provides continuous color to the edge of the finished product.

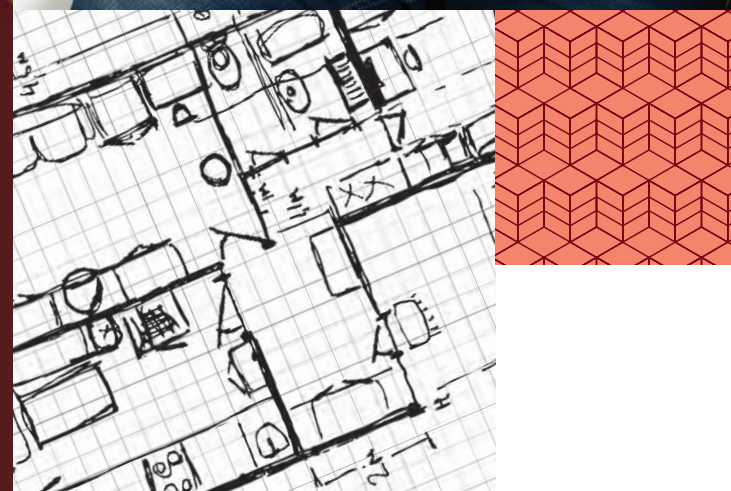
FRL® Fiber Reinforced Laminate is the ideal high-impact surfacing solution for high-traffic environments.



CONTINUOUS COLOR TO THE EDGE

HPL is a perfect surface for almost any horizontal or vertical application.

Panolam® TFL is a durable surface with excellent HPL color and pattern coordination.



## Finish Options

Pionite® high pressure laminates are available in 17 different finishes designed to enhance the look and texture of any project. Please contact your local Pionite representative or visit pionite.com for finish samples, grade and sheet availability. For quicker procession of your sample request, kindly use the designated finish code as listed in the chart below.

**Ashwood (z)** is a fine wood finish with a cathedral grain.

**Barnboard (bb)** is a linear woodgrain with a slight satin sheen.

**Crystal (j)** is a fine pebble grained finish with a medium gloss.

**Embossed Leather (L)** is a deeply embossed leather finish.

**Embossed Slate (w)** is a deeply embossed slate finish.

**Granite (R)** is a polished textured finish.

**Gloss (g)** is a high gloss, smooth finish.

**Hi-Brite (H)** is a smoothly textured furniture finish.

**Line Z (oz)** is a deeply embossed, linear woodgrain finish.

**Linen (ol)** is an embossed, cloth-like finish.

**Medium Gloss (u)** is a medium gloss, smooth finish.

**Soft Leather (c)** is a finely grained leather finish.

**StoneX (v)** is a combined natural and polished surface.

**Suede (N)** is a low gloss, textured finish.

**Super Matte (F)** is a smooth, non-reflective finish.

**Velvet (vp)** is a smooth, finely grained finish.

**Wood Essence (i)** is a natural-appearing, linear woodgrain finish.

## Environmental Features

No matter which color you choose, Pionite makes your laminate green!

- Pionite's low emission products are GREENGUARD® certified.
- By formulating our own resins, we can assure you of an eco-conscious manufacturing process.
- Pionite® laminates are easy to clean without using harsh chemicals.
- Our products are manufactured with kraft and decorative paper from recycled or renewable sources to help preserve our forests and promote a healthier environment.
- Distribution centers are strategically located across the country to reduce the use of fossil fuels when delivering Pionite products.
- Pionite® HPL surfaces do not support bacterial growth making them an ideal choice for healthcare, education and food service installations.



The mark of responsible forestry



GOLD



Learn more: scan for further information



For over 70 years, Pionite® Surface Systems has developed materials that meet the aesthetic criteria of the most demanding architects and designers. Pionite® HPL comes in 200+ colors and patterns with a variety of finishes and in-house custom printing capabilities. It is an ideal surface for almost any horizontal or vertical application. The Pionite family of products have been developed to withstand the friction, impact, and ever-changing conditions of life.

With Pionite® high pressure laminates, the possibilities are virtually endless



AW841 N Ivory Cirrus	AG130 F AG081 F Sugar Pie	AG130 F Cookies & Cream	AG291 N Negotiating in Geneva	AG601 N Pearl of the Orient	AG471 N Cinder Gray Concrete	AG500 C Cake Batter	AG431 N Gray Linen	AG321 N Stonedust Crepe	AG771 N Moonlighting Paper	PF420 N Top Party in Boston	AT680 N Travelin' Light	PF451 N Gridlock in L.A.	AT610 N Oatmeal Fiber™	AT751 N Beige Crepe	AT610 N Woven Weave
AW981 N Ice Fishin'	AG381 N Mineral Talc	PF454 N Streets of San Francisco	AG371 N Cardamom Fiber	AG071 N Macadamia Nut	AT301 N Belgian Linen	WX600 N Mocha Almond Fudge	AT231 N Manila Linen	AV120 N Singer Shop	AT341 N Here Comes the Sun	AT241 N Cinnamon Fiber	AT121 N Moroccan Fresco				

AW785 N White Spektrum	AW785 N White Spektrum	AW785 N White Spektrum	AW785 N White Spektrum	AW785 N White Spektrum	AW785 N White Spektrum	AW785 N White Spektrum	AW785 N White Spektrum	AW785 N White Spektrum	AW785 N White Spektrum	AW785 N White Spektrum	AW785 N White Spektrum	AW785 N White Spektrum	AW785 N White Spektrum	AW785 N White Spektrum	AW785 N White Spektrum
AW785 N White Spektrum	AW785 N White Spektrum	AW785 N White Spektrum	AW785 N White Spektrum	AW785 N White Spektrum	AW785 N White Spektrum	AW785 N White Spektrum	AW785 N White Spektrum	AW785 N White Spektrum	AW785 N White Spektrum	AW785 N White Spektrum	AW785 N White Spektrum	AW785 N White Spektrum	AW785 N White Spektrum	AW785 N White Spektrum	AW785 N White Spektrum
AW785 N White Spektrum	AW785 N White Spektrum	AW785 N White Spektrum	AW785 N White Spektrum	AW785 N White Spektrum	AW785 N White Spektrum	AW785 N White Spektrum	AW785 N White Spektrum	AW785 N White Spektrum	AW785 N White Spektrum	AW785 N White Spektrum	AW785 N White Spektrum	AW785 N White Spektrum	AW785 N White Spektrum	AW785 N White Spektrum	AW785 N White Spektrum



SP409 N Tutti Frutti	SP409 N Tutti Frutti	SP409 N Tutti Frutti	SP409 N Tutti Frutti	SP409 N Tutti Frutti	SP409 N Tutti Frutti	SP409 N Tutti Frutti	SP409 N Tutti Frutti	SP409 N Tutti Frutti	SP409 N Tutti Frutti	SP409 N Tutti Frutti	SP409 N Tutti Frutti	SP409 N Tutti Frutti	SP409 N Tutti Frutti	SP409 N Tutti Frutti	SP409 N Tutti Frutti
SP409 N Tutti Frutti	SP409 N Tutti Frutti	SP409 N Tutti Frutti	SP409 N Tutti Frutti	SP409 N Tutti Frutti	SP409 N Tutti Frutti	SP409 N Tutti Frutti	SP409 N Tutti Frutti	SP409 N Tutti Frutti	SP409 N Tutti Frutti	SP409 N Tutti Frutti	SP409 N Tutti Frutti	SP409 N Tutti Frutti	SP409 N Tutti Frutti	SP409 N Tutti Frutti	SP409 N Tutti Frutti

SG214 N Bankers Gray	SG214 N Bankers Gray	SG214 N Bankers Gray	SG214 N Bankers Gray	SG214 N Bankers Gray	SG214 N Bankers Gray	SG214 N Bankers Gray	SG214 N Bankers Gray	SG214 N Bankers Gray	SG214 N Bankers Gray	SG214 N Bankers Gray	SG214 N Bankers Gray	SG214 N Bankers Gray	SG214 N Bankers Gray	SG214 N Bankers Gray	SG214 N Bankers Gray
SG214 N Bankers Gray	SG214 N Bankers Gray	SG214 N Bankers Gray	SG214 N Bankers Gray	SG214 N Bankers Gray	SG214 N Bankers Gray	SG214 N Bankers Gray	SG214 N Bankers Gray	SG214 N Bankers Gray	SG214 N Bankers Gray	SG214 N Bankers Gray	SG214 N Bankers Gray	SG214 N Bankers Gray	SG214 N Bankers Gray	SG214 N Bankers Gray	SG214 N Bankers Gray
SG214 N Bankers Gray	SG214 N Bankers Gray	SG214 N Bankers Gray	SG214 N Bankers Gray	SG214 N Bankers Gray	SG214 N Bankers Gray	SG214 N Bankers Gray	SG214 N Bankers Gray	SG214 N Bankers Gray	SG214 N Bankers Gray	SG214 N Bankers Gray	SG214 N Bankers Gray	SG214 N Bankers Gray	SG214 N Bankers Gray	SG214 N Bankers Gray	SG214 N Bankers Gray



WW095 N Omate Oak	WW095 N Omate Oak	WW095 N Omate Oak	WW095 N Omate Oak	WW095 N Omate Oak	WW095 N Omate Oak	WW095 N Omate Oak	WW095 N Omate Oak	WW095 N Omate Oak	WW095 N Omate Oak	WW095 N Omate Oak	WW095 N Omate Oak	WW095 N Omate Oak	WW095 N Omate Oak	WW095 N Omate Oak	WW095 N Omate Oak
WW095 N Omate Oak	WW095 N Omate Oak	WW095 N Omate Oak	WW095 N Omate Oak	WW095 N Omate Oak	WW095 N Omate Oak	WW095 N Omate Oak	WW095 N Omate Oak	WW095 N Omate Oak	WW095 N Omate Oak	WW095 N Omate Oak	WW095 N Omate Oak	WW095 N Omate Oak	WW095 N Omate Oak	WW095 N Omate Oak	WW095 N Omate Oak
WW095 N Omate Oak	WW095 N Omate Oak	WW095 N Omate Oak	WW095 N Omate Oak	WW095 N Omate Oak	WW095 N Omate Oak	WW095 N Omate Oak	WW095 N Omate Oak	WW095 N Omate Oak	WW095 N Omate Oak	WW095 N Omate Oak	WW095 N Omate Oak	WW095 N Omate Oak	WW095 N Omate Oak	WW095 N Omate Oak	WW095 N Omate Oak

- Please note:**
- Printed patterns are shown at a reduced scale from representative segments of large sheets
  - Colors may differ slightly from the actual product

- THE QUARRY COLLECTION™**  
Embodiment of the natural essence of stone, this line of 118 large patterns aesthetically appeals to both residential and commercial applications.
- THE INDULGENCE COLLECTION™**  
New for 2015, this line is all about imagination, collaboration, and innovation by placing visual harmony and compatibility at the forefront.



## Technical Specifications

Technical information listed below applies to high pressure decorative laminates. For additional technical data, specification sheets, and three-part CSI, visit [pionite.com](http://pionite.com).

### STANDARD LAMINATE

Pionite® Standard Laminate is designed for either horizontal, vertical, or postforming applications. Typical uses include countertops, tables, vanities, interior doors, cabinets, contract furniture, and retail store fixtures. Three standard grades of Pionite® laminate are suitable for most applications.

#### G48 General Purpose Grade

**Nominal Thickness 0.048"/1.2 mm (NEMA HGS).** Most often used in horizontal applications where high-impact resistance and a durable, decorative surface is required.

REFERENCE PIONITE TECHNICAL BULLETIN #SMPTB000-001.

#### F39 Postforming Grade

**Nominal Thickness 0.039"/1.0 mm (NEMA HGP).** Designed for manufacturing countertops and other horizontal surfaces where the laminate may be heated and rolled over the substrate edge to eliminate seams.

REFERENCE PIONITE TECHNICAL BULLETIN #SMPTB000-002.

#### F28 Postforming Grade

**Nominal Thickness 0.028"/0.7 mm (NEMA VGP).** Designed for surfaces where impact resistance is less critical.

REFERENCE PIONITE TECHNICAL BULLETIN #SMPTB000-003.

### SPECIALTY PRODUCTS

#### ThruColor™ HPL Laminate

ThruColor™ HPL is intended for use in applications where the edge of laminate contributes to the aesthetics of the final product. Pionite's elegant manufacturing process provides a second generation color-through laminate that is more flexible and much less likely to chip than other color-through laminates. ThruColor™ HPL colors and their corresponding colors in standard Pionite are not exact matches. Sample evaluation is recommended. Ideal for high-wear horizontal and vertical applications such as high-end furniture.

REFERENCE PIONITE TECHNICAL BULLETIN #SMPTB000-005.

#### ChemGuard: Chemical Resistant Laminate

Available in thicknesses up to 1" (25.4 mm). Pionite® ChemGuard incorporates the decorative features of high-pressure laminate into a durable, chemical resistant surfacing material. The unique manufacturing process of Pionite® ChemGuard results in a product with excellent chemical resistant properties. This feature ensures that the ChemGuard surface is more chemical resistant than competitive laminate. Pionite® ChemGuard's superior chemical resistant surface cannot be softened with heat for postforming. Typical uses include education labs and culinary testing facilities. ChemGuard is ideal for photographic darkrooms; nurses stations; medical, dental, and veterinary work areas; and mortuaries. Thicker ChemGuard laminate can be used as structural components in laboratory bench tops precluding the use of a substrate.

REFERENCE PIONITE TECHNICAL BULLETIN #SMPTB000-007.

#### DecoCor® Thick Phenolic Core Laminate

Available in thickness up to 1" (25.4 mm).

Designed for applications where the decorative surface must contribute to the structural stability of the finished assembly. DecoCor® offers the same chemical resistance properties as standard Pionite laminate. DecoCor® thick phenolic can be manufactured with enhanced chemical resistance. Available in the following configurations: decorative both sides; decorative one side, glueable one side; glueable both sides. Available with black or brown edge. Typical uses include toilet and dressing room privacy partitions, tabletops, doors, workstations, wall panels, and desktops. DecoCor® laminate can be manufactured to provide Class A fire test performance.

REFERENCE PIONITE TECHNICAL BULLETIN #SMPTB000-008.

#### Fire Rated Laminate

Designed for applications where a decorative surface must resist combustion and inhibit smoke production. Fire rated laminate is classified by Underwriter's Laboratory, Inc. under File R6581 in both the US and in Canada. In addition, this product is also IMO certified for use in Marine applications. Typical uses include elevator cabs, hospitals, schools, airports, hotels, and other public buildings where strict fire codes apply.

REFERENCE PIONITE TECHNICAL BULLETIN #SMPTB000-006.

#### Hi-Wear Laminate

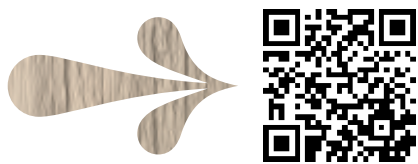
Designed for applications requiring increased abrasion and scuff resistance. The product offers more than five times the wear resistance of standard grade laminate. Due to the manufacturing process, Pionite® Hi-Wear laminate will vary in color from corresponding colors in standard Pionite. This effect is more pronounced in darker colors and patterns. Sample evaluation prior to order placement is recommended. Typical uses include buffet counters, salad bars, checkout counters, kickboards, bartops, and restaurant counters.

REFERENCE PIONITE TECHNICAL BULLETIN #SMPTB000-011.

#### ESD (Electrostatic Dissipative Laminate)

Developed specifically for surfacing workstations where static-sensitive electronic components are manufactured and assembled. ESD is postformable. Works well in hospitals, medical facilities, and clean rooms as the surface will not attract dust or dirt particles. Due to the unique composition of this product, SDL colors and their corresponding colors in standard Pionite are not exact matches. Sample evaluation is recommended.

REFERENCE PIONITE TECHNICAL BULLETIN #SMPTB000-009.



Scan for more information.

Learn more at  
[pionite.com](http://pionite.com)



20 PROGRESS DRIVE, SHELTON, CT 06484  
877.726.6526 PANOLAM.COM